



# Annual Progress Report

***FY 2021-2022***



**Rural Development Trust (RDT)**

**Sangram, Madhubani, Bihar**

**Email: - [rdtrustsangram@gmail.com](mailto:rdtrustsangram@gmail.com)**

**Website: - [www.rdtrustsangram.org](http://www.rdtrustsangram.org)**

**Contact No: - +91-9939441229**

## General Information

### ORGANISATION PROFILE

Name	Rural Development Trust
Address of the organization	Sangram,Tulapatganj, Madhubani-847109
Name & Address of Contact Person	Md. Sadullah, Chief Patron, Sangram, P.O. – Tulapatgaj, Dist - Madhubani, Pin - 847109
Mobile	09939441229
Website	<a href="http://www.rdtrustsangram.org">www.rdtrustsangram.org</a>
Email	<a href="mailto:rdtrustsangram@gmail.com">rdtrustsangram@gmail.com</a>

#### Registration Details: -

1 Trust Deed No 30/04/CD 1/09/08/2006

2 12AA/1266-67/10/06/2009

3 Pan No- AABTR2397A

4 FCRA Act 2010

#### Bank details

FCRA-A/c No. :-2338179728

IFSC Code – CBIN0282887

MICR Code- 847016735

Central Bank of India, Branch – Sudai

**RURAL DEVELOPMENT TRUST**

A/C- No-57761011008948

IFSC Code- BKID0005776

MICR Code-847013507

Bank Of India Branch Araria Sangram P

O- Tulapatganj Dist- Madhubani 847109

FCRA Account – RURAL DEVELOPMENT TRUST A/C No – 40101179701

Branch Code: 691

IFSC: SBIN0000691

MICR: 110002087

STATE BANK OF INDIA NEW DELHI MAIN BRANCH N. D. MAIN BRANCH 11, PARLIAMENT STREET NEW DELHI NCT OF DELH-110001

#### Funding Resources: -

- 1 Member's/ Sympathizers contribution
- 2 Contribution / Fees from beneficiaries
- 3 Adra India, Patna

- 4 Misereor Germany
- 5 GPSVS Madhubani

### Working Area: -

District	Blocks	Panchayats	Villages	Households	Population
Madhubani	5	18	50	10000	250000

### Board of Trustees:

Name	Address	Age	Sex	Qual.	Caste	Design.
MD. Sadullah	At- Sangram, P.O.- TulapatGanj, Madhubani (Bihar)	33	Male	B.A.	GEN.	Chairman
MD. Wasimul haque	At- Sangram, P.O.- TulapatGanj, Madhubani (Bihar)	45	Male	I.A.	EBC	Managing Trustee
Kiran Devi	At- Sangram, P.O.- TulapatGanj, Madhubani (Bihar)	35	Female	Matric	SC	Trustee
Nahida Pravin	At- Pipraulia, P.O. – Arariya, Madhubani (Bihar)	32	Female	Matric	GEN.	Trustee
Abdul Rasid	At- Sangram, P.O.- TulapatGanj, Madhubani (Bihar)	50	Male	Matric	OBC	Trustee
Siyma Praveen	At- Sangram, P.O.- TulapatGanj, Madhubani (Bihar)	35	Female	Matric	EBC	Trustee
Baiju Mahto	At- Sangram, P.O.- TulapatGanj, Madhubani (Bihar)	30	Male	Literate	SC	Trustee
Ajay Kumar	At + P.O.- TulapatGanj, Madhubani (Bihar)	32	Male	B.A.	OBC	Trustee
Riyaz Ahmad	At – Mauahi, P.O. – Tulapatganj, Madhbani, (Bihar)	45	Male	BA	GEN.	Trustee

### Networking / Collaborating Agencies: -

- 1 Cross-border Anti-trafficking Network (CBATN), Bihar, Patna.
- 2 Vikas Adharshila (Development Foundation), Madhubani
- 3 Badh Mukti Abhiyan, Patna
- 4 GPSVS, Jagatpur, Madhubani.
- 5 World Neighbors (WN)

### VISION: -

To Create a permanent, irreversible change in the lives of people in rural India in coming years.

### MISSION: -

To evolve a strong, sustainable programme to improve the standard of living and to provide the necessary health care and education facilities to the society.

### OBJECTIVES: -

- 1 To prevent arrest and reserve degradation of life support, particularly land, water, to expand livelihood

opportunities in a sustainable and equitable manner through people's participation with gender perspectives.

- 2 To start, promote, encourage and assist activities for economic, moral, and social upliftment of rural people particularly women and Dalit, for making unity and development, reciprocal cooperation between people;
- 3 To encourage and promote the feelings of equality, liberty, fraternity, mutual understanding, cooperation, communal harmony, national solidarity and emotional integration among all the sections of people in India;
- 4 To create amongst the rural population the consciousness of environment and ecological factors conducive to healthier life for themselves and also of recoverable consequences resulting from ecological imbalances;
- 5 To create awareness on Human Rights and to assist in protecting it;
- 6 To provide legal assistance and free legal aid to poor.

#### **Past Activities: -**

- 1 Women and Dalit empowerment: -
- 2 Capacity building: -
- 3 Education: -
- 4 Relief and Rehabilitation: -
- 5 Promotion Of Traditional Health System
- 6 Climate Change Issue
- 7 Vocational Training



## INTRODUCTION:

Rural Development Trust (RDT) is a non-profit, non-governmental social development organization founded by a group of passionate people, social activists, and development professionals in 2006. RDT is a leading non-profit organization with a significant presence in the Indian state of Bihar. It is established as a Public Charitable Trust under the Indian Trust Registration Act 1982 based in Madhubani district Bihar, India. RDT closely works with vulnerable communities and empowers socially marginalized people by providing capacity-building activities, livelihood linkage, education, and health facilities along with promoting a people-oriented knowledge base to influence the policies of government on different development issues through facilitation, building networks with government agencies, and partnership of other organizations.

## Vision:

Rural Development Trust aspires for a society where community based on equality and fraternity.

## Mission:

The Trust aims to make communities work on the basis of equality, justice and non-violence with human rights and gender perspectives in all the aspects.

## Major Key Objective:

- To prevent arrest and reserve degradation of life support, particularly land, water, to expand livelihood opportunities in a sustainable and equitable manner through people's participation with gender perspectives.
- To start, promote, encourage and assist activities for economic, moral, and social upliftment of rural people particularly women and Dalit, for making unity and development, reciprocal cooperation between people;
- To encourage and promote the feelings of equality, liberty, fraternity, mutual understanding, cooperation, communal harmony, national solidarity, and emotional integration among all the sections of people in India;
- To create amongst the rural population the consciousness of the environment and ecological factors conducive to a healthier life for themselves and also of recoverable consequences resulting from ecological imbalances;
- To create awareness on Human Rights and to assist in protecting them;
- To provide legal assistance and free legal aid to poor.

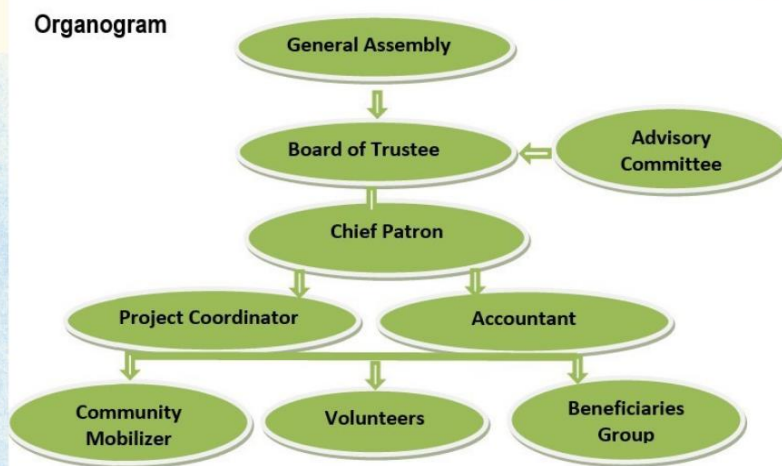
## Target Communities:

RDT focused on the following communities:  
SC/Dalit, Minority, OBC, Extremely Backward Community  
(Special attention to Children, Women, Old age people and handicapped)

## Working Areas:

Districts:- Madhubani, Darbhanga, Supaul  
Blocks:- 5  
Panchayats:- 18  
Villages:- 50  
No of HHs:- 5000

### Organogram





## Thematic Program

### **Educational Support Program**

The program supports students of Madani Public School by providing educational materials through its core fund. The fund is raised through its membership fee and 0.2 percent from the annual income of professional members of the organization.

- Provide Modern Education system to the Minority communities children
- Create Awareness among the school children on Environment protection and Their Fundamental Rights

### **Relief**

The program supports flood victims of the Madhubani & Darbhanga districts. The organization collects data of flood victims and provides them relief and if needed also rehabilitates them. The program also provides basic financial relief funds to resume their livelihood activities.

- Provide emergency relief materials to the most affected people for meet their basic need during disaster period
- Distributed Ramdan Food kit to the most poor and vulnerable minority communities

### **Climate Change Mitigation**

The program supported the community to cope with climate change issues and also facilitated communities on climate change mitigation through building a network with local CBOs/CSOs. Tree plantation, advocacy, and awareness-raising were major activities.

- Promotion of tree plantation for increasing greenery at the community and school level
- Community based Climate Change Adaptation and Mitigation Awareness campaigning Program

### **Saving & Credit Group Formation and strengthening**

- Organizing women so that together they can develop themselves,
- Develop leadership capacity in women and to be able to take decisions on their own.
- Economic empowerment of women and move towards self-reliance.
- Stop the gender inequality.
- Creating awareness among the community for the actions of environment, climate change and disaster risk reduction
- Promotion of Income generation and secure livelihood activities for rural women and farmer

### **Home Based nutrition garden**

The purpose of Home Based Nutrition Garden is that you use greens and vegetables from your garden every day, if you spend 200 rupees per day on greens and vegetables in your family, then it is 6000 thousand in a

month, if you grow in your courtyard , If you plant greens and vegetables by making small curry in the yard, then you will have a monthly savings of 6 thousand, then in this way in 12 months there will be a saving of 72 thousand rupees.

- Getting fresh green vegetable and increased their nutrition level
- Reduced the expenditures and save their monthly saving money
- Improved green environment through planting fruits sapling

### **Health and nutrition awareness program**

We all need nutrients for body development, strength and to remain healthy. This nutrient is mainly available from our balanced diet. We need daily bus, protein, vitamin and carbohydrate in balanced diet, in this 20% protein, 35% vitamin and 40% carbohydrate is required. The need of these three elements can be obtained through vegetables, grains, milk, fish, meat. Giving nutritious food to the pregnant woman keeps the health of the children growing in the womb along with the pregnant woman healthy, a nourished baby will be born. Giving roti, marua, egg, soyabean, etc. keeps health healthy, after the birth of a child, the body of a lactating woman needs nutrition, calcium, vitamin D3, etc. to be fully prepared.

### **Water sanitation and hygiene awareness program**

- Mass Awareness campaign on the importance of toilet and stop the open defecation
- Awareness generation program on safe drinking water and water source point improvement
- Create awareness among the adolescent girls and women on Menstruations Hygiene Management
- Community Cleaning program School Level Awareness campaign program on WASH in School
- Community Sensitization program on Government Scheme and entitlement

### **Livelihood Promotion and Organic Farming Practices**

- Making compost through waste management
- Promotion of traditional and local seeds for improving water efficient farming and income
- Promotion of seasonal farming practices
- Promotion of organic farming and home-based nutrition garden
- Promotion of animal feed and vaccinated against foot-and-mouth disease.
- Promotion of social and agro forestry for improving farming practices
- Provide seasonal traditional seeds for cash cropping and other vegetable farming
- Capacity building training to adolescent girls for their livelihood promotion
- Provide Mithila Painting training program

### **Information / Benefits of Government Programs**

In rural areas, communities are deprived of many government schemes, sometimes the Panchayat representative should be invited in the monthly meeting of the group, and the way to get benefits from the Panchayat representative should also be understood by getting information about the government scheme.

- Create Awareness on getting on government scheme and entitlement
- Build Network with GPSVS and other funding agency for improving IEC materials development and access to Government scheme

## Project Based Activities and Achievement

### SHE CAN – empowering rural women in Jhanjharpur & Laknaur in Bihar through WASH and Reproductive Health

#### Background:

Bihar remains one of the poorest states in the country, grappling with poverty, low income, gender inequality, malnutrition, overpopulation, poor healthcare, low literacy rate, subsistence agriculture, depleting water sources, poor sanitation and hygiene, and lack of employment opportunities. Around 88% of the population resides in rural areas, with 80% of the population engaged in agriculture. The caste system, followed by discrimination towards lower castes, is prevalent in our working communities of Madhubani, Bihar. As a result, these cohorts are far left behind and devoid of opportunities.



Support from Guptas in Year 1 helped WN initiate programs covering 17 tolas (settlements) where we formed 21 savings and credit groups and initiated activities around vegetable farming, composting, seed preservation, sanitation, awareness on personal hygiene, and government schemes. Some women were able to start their small businesses through loans taken from their groups. Some build toilets from the loan. Women gained confidence in organizing and participating in community events like cleaning campaigns. We could reach the unreached community (old, sick, disabled people, young mothers) through the Covid-19 vaccination camp which was possible through the Gupta fund.

Year 2 support from Guptas will enable WN to deepen its program, covering 25 savings and credit groups from rural areas of Jhanjharpur and Lakhaaur Block (will cover 21 small settlements). The program will help build the capacity of these rural and marginalized communities to determine and participate in their



*sustainable development. The group members are from marginalized communities (poor, Dalits, scheduled and minority castes, out of reach from any other external aids) living below the poverty line.*

## **Program Components:**

### **1. Increasing food security and raising awareness of nutrition:**

- i. Raise awareness among group members (women/farmers) about dietary diversity, nutrition, and the importance of growing food for the family.
- ii. Train farmers on enhancing soil health through the use of manures, crop rotation, reduced tillage, mulching, cover cropping.
- iii. Promote and train farmers to set up poshan batika (kitchen garden with varieties of vegetables of high nutritional value).
- iv. Train farmers to collect, produce, preserve and recycle traditional seeds.
- v. Train selective farmers to upscale vegetable production on a commercial scale.
- vi. Train selective farmers on post-harvest management.
- vii. Link farmers with the local market for selling the produce.
- viii. Train selective farmers on livestock management and breed improvement.
- ix. Conduct orientation and link farmers with government schemes available to them.



### **2. Diversifying livelihood sources and increasing household incomes:**

- i. Facilitate the formation of four savings and credit groups (total of 25 savings and credit group).
- ii. Train new group members on savings and credit group management and account keeping.
- iii. Provide refresher training on group management and account keeping to old savings and credit groups.
- iv. Train selective farmers on diversification of income sources through crop diversification (intercropping of high-value cash crops).
- v. Promote and support small-scale businesses.

vi. Explore local crops for the possibility of value addition.

### 3. Sustainable utilization of natural resources:

i. Educate communities on the sustainable utilization of their natural resources (soil, trees, water sources, land).

ii. Promote the plantation of fruit trees as a long-term measure for food security, income, nutrition, and protecting the environment.

iii. Promote agroforestry.

iv. Train communities to set up tree nurseries.

v. Encourage farmers to establish woodlots in households and schools.



### 4. Sensitize and Link

#### Community Members to Community and Reproductive Health Services

i. Raise awareness among group members, schools, and working communities on sanitation, personal hygiene, and access to potable water.

ii. Sensitize group members on various aspects of women's reproductive health and encourage seeking professional help immediately as needed.

iii. Conduct community awareness campaigns on the prevention of common diseases, heat and cold wave, and infection control.

iv. Encourage and facilitate group members to build toilets, as per their affordability, to make their communities open defecation.

### 5. Building Resilience of Communities

Without proper preparation against possible disasters such as earthquakes, floods, droughts, fires, or pandemics, all development gains built upon years and years of effort and investment will go to waste. With the generous support of Guptas, we will initiate a vulnerability assessment of our program communities and take necessary action to build their resilience against possible risks. The activities will be based on the vulnerability/risk assessment study and will be incorporated into our core program.

Activities	Achievements
Train new group	RDT organization has successfully conducted diverse training programs aimed at

<p><b>members on savings and credit group management and account keeping</b></p>	<p>empowering women through financial literacy and management skills. These initiatives resulted in the formation of <b>25 women's groups and saw a remarkable participation of 458 members</b>. The training focused primarily on Savings and Credit Group Management (KMM) and efficient account keeping. The impact of these training programs was substantial, leading to the formation of 25 distinct women's groups within the community. These groups served as platforms for collaboration, support, and collective financial growth. Moreover, an impressive 458 women actively participated and joined these groups, showcasing a strong interest and commitment towards enhancing their financial literacy and management skills.</p>
<p><b>Train farmers on enhancing soil health through the use of manures, crop rotation, reduced tillage, mulching, cover cropping</b></p>	<p>RDT Organization undertook a pivotal role in the agricultural community by organizing a comprehensive training program aimed at enhancing soil health for local farmers. The program focused on implementing sustainable farming techniques such as the use of manures, crop rotation, reduced tillage, mulching, cover cropping, and the creation of organic pesticides like vermin compost, compost, Sanjivni organic pesticide, and decompose pesticides. The most impactful outcome of this endeavor was witnessed as 78 participating farmers successfully prepared various organic inputs, including vermin compost, compost, Sanjivni organic pesticide, and decompose pesticides. These organic substances not only improve soil fertility but also promote biodiversity and mitigate environmental risks associated with chemical-intensive agriculture.</p>
<p><b>Promote and support small-scale businesses.</b></p>	<p>RDT identified the potential within women's groups and provided them with the necessary resources, guidance, and training. The emphasis was on cultivating self-reliance and business acumen among these individuals, enabling them to embark on entrepreneurial endeavors. <b>The establishment of seven Kirana Shops by women group members</b> is a significant stride towards economic autonomy. These shops not only cater to the local community's daily needs but also serve as</p>





	<p>platforms for these women to showcase their business skills. RDT's support in securing initial stocks, offering financial literacy workshops, and guiding marketing strategies has been pivotal in the success of these ventures. Furthermore, RDT's assistance in initiating fish cultivation and goatery in two households has brought about diversification in livelihoods. These ventures not only contribute to food security but also serve as additional income sources for these families.</p>
<p><b>Conservation of Traditional Seeds for organic farming practices</b></p>	<p>RDT took initiative in providing training and support to farmers for the conservation of traditional seeds in organic farming practices yielded exceptional results. <b>A group of 59 dedicated farmers actively participated in this program</b>, contributing significantly to the conservation efforts of eight types of vegetables and grain seeds. This accomplishment marked a pivotal step towards preserving biodiversity and promoting sustainable agriculture practices. RDT conducted comprehensive training sessions, equipping farmers with knowledge about the importance of preserving traditional seeds. Farmers were educated about the significance of these seeds in maintaining biodiversity, their resilience to local environmental conditions, and their role in producing nutritious organic crops.</p>
<p><b>Promotion of Tree Plantation for natural resource conservation</b></p>	<p>RDT's initiative to promote tree plantation among farmers has not only empowered individuals by securing their livelihoods but has also contributed significantly to environmental conservation. <b>78 farmers actively engaged</b> in the initiative, demonstrating their commitment to sustainable practices. Through awareness campaigns and workshops, farmers were educated on the importance of tree plantation for their livelihoods and the environment. <b>A total of 560 timber and wood plants were planted</b>, encompassing a diverse range of tree species. The variety of trees planted contributes to biodiversity preservation while meeting the local demand for timber and wood resources.</p>
<p><b>Promotion of toilet and soak pit for improving healthy lives</b></p>	<p>Rural Development Trust (RDT) embarked on a mission to enhance the quality of life in communities by improving sanitation facilities and promoting health initiatives. By collaborating with Panchayati Raj Institutions (PRIs) and leveraging government schemes, RDT successfully facilitated the construction of toilets and soak pits, thereby significantly impacting the health and well-being of local residents. Through coordinated efforts, <b>RDT successfully facilitated the</b></p>

	<p><b>construction of 67 soak pits and over 100 toilets at the grassroots level,</b> thereby significantly benefiting the local populace.</p>
<p><b>Promotion of Kitchen Garden at the Households and Community Level</b></p>	<p>RDT promoted the establishment of kitchen gardens at both household and community levels.</p> <p>Understanding the significance of self-sustenance and nutritional intake, it aimed to empower communities by imparting training programs focused on creating and maintaining kitchen gardens. To ensure the success of this initiative, RDT collaborated with various key stakeholders such as Agriculture consultants and KVK (Krishi Vigyan Kendra). This partnership allowed for a comprehensive and multifaceted approach to training and support. <b>A total of 209 households</b> actively established their kitchen gardens. By establishing kitchen gardens, households gained a sense of self-reliance and empowerment in providing fresh produce for their families.</p> 
<p><b>Education Awareness Campaign and Strengthening of Formal Adult Literacy centre</b></p>	<p>Rural Development Trust (RDT) embarked on a transformative journey to empower women through its Education Awareness Campaign program. Recognizing the fundamental importance of literacy and education, RDT established a Formal Adult Literacy Centre that has resulted in remarkable success. 30 women, previously lacking basic literacy skills, have now undergone significant transformation, acquiring essential knowledge and skills that have empowered them in numerous ways. RDT successfully enrolled 30 women in the Adult Literacy Centre. Recognizing the diverse backgrounds and learning capacities of each participant, personalized learning plans were formulated, catering to individual needs.</p>





### ***Education Program: Madina Public School***

Rural Development Trust has been a pivotal force in uplifting underserved communities, especially minorities, through education initiatives. The establishment of Madina Public School represents a beacon of hope and progress in providing accessible and quality education to children belonging to marginalized backgrounds.



### **Foundation and Vision:**

Madina Public School was founded by RDT with a vision to bridge the educational gap prevalent among minority families in the region. It aimed not only to provide academic education but also to instill values, critical thinking, and a sense of empowerment among its students.



## **Enrolment and Expansion:**

Over the years, Madina Public School witnessed remarkable growth in student enrollment. Starting from a few dozen students, the school now boasts an impressive count of 534 pupils. This surge in admissions is a testament to the trust and impact the school has garnered within the community.

## **Academic Excellence:**

The school's commitment to academic excellence is evident through various achievements. The students have excelled not only in traditional academics but also in extracurricular activities, showcasing their holistic development.

## **Community Engagement:**

Madina Public School has become an integral part of the local community, fostering a sense of inclusivity and cooperation. Various initiatives, such as parent-teacher interactions, community outreach programs, and awareness campaigns, have strengthened the school's ties with the neighborhood.

## **Impact and Transformation:**

The impact of Madina Public School extends far beyond mere numbers. It has transformed lives and uplifted entire families. By providing education, the school has broken the cycle of illiteracy and opened doors to a brighter future for its students.

## **Individual Transformations:**

The stories of individual students who have overcome challenges and transformed their lives through education are inspiring. Many students, previously deprived of educational opportunities, have found a platform at Madina Public School to nurture their talents and aspirations.



## **Empowerment of Women:**

The school's impact goes beyond just children; it has empowered women in the community as well. By encouraging female education, the school has played a pivotal role in fostering gender equality and women's empowerment.

## **Collaborations and Support:**

Partnerships with local authorities, NGOs, and philanthropic individuals have provided crucial support to the school. These collaborations have facilitated infrastructural developments, resource enhancements, and access to additional educational opportunities for the students.

## **Challenges and Overcoming Adversities:**

The journey of Madina Public School has not been devoid of challenges. Overcoming financial constraints, addressing infrastructural limitations, and ensuring sustained community support have been ongoing challenges that the school has navigated with resilience and determination.

## **Future Prospects and Sustainability:**

Looking ahead, Madina Public School aims to further expand its reach and impact. Sustainability measures, including fundraising initiatives, alumni engagement, and fostering stronger community ties, will be crucial in ensuring the continuity and growth of the school.

## **Improving sustainable livelihood options to adolescent girls through Jamaila Tailoring Centre**

### **Jamaila Tailoring Centre: - Skill Development**

Rural Development Trust (RDT), in collaboration with the Jamaila Tailoring Centre, embarked on a transformative journey aimed at empowering adolescent girls by providing them with sustainable livelihood options through skill-building initiatives in tailoring and cloth cutting. This strategic partnership, coupled with financial support, has yielded remarkable results, enabling 83 adolescent girls to acquire valuable skills in tailoring, transform into trained tailors, and initiate their journey toward financial independence.

In many rural communities, adolescent girls often face barriers to accessing education and economic opportunities, hindering their prospects for a better future. Recognizing this challenge, RDT, a proactive organization committed to holistic community development, devised a multifaceted approach to address the socioeconomic needs of adolescent girls. Through the establishment of the Jamaila Tailoring Centre, RDT aimed to provide a platform for skill development, fostering self-reliance among young girls in these communities.

## **Initiating the Skill-Building Program:**

RDT's collaboration with the Jamaila Tailoring Centre commenced with meticulous planning, identifying the specific needs and aspirations of adolescent girls in the target communities. With a focus on promoting self-sufficiency, the program was tailored to impart comprehensive training in tailoring and cloth cutting. The curriculum was thoughtfully designed to cover fundamental and advanced techniques, pattern-making, machine operation, fabric selection, and entrepreneurial skills.

The journey began with 83 enthusiastic adolescent girls eagerly enrolling in the tailored skill-building program. Dedicated trainers, equipped with expertise in tailoring, guided the participants through an

immersive learning experience. Practical sessions, supplemented by theoretical lessons, empowered the girls to hone their craftsmanship, enabling them to produce high-quality garments and master the art of tailoring.

### **Impact and Economic Empowerment:**

Upon completing the program, these 83 adolescent girls emerged not just as trained tailors but as enterprising individuals. Many of them commenced their small-scale tailoring businesses, leveraging their skills to meet the local demand for custom-made garments. The economic impact was significant, with each girl contributing to their household income, thereby alleviating financial burdens and enhancing their families' standards of living. The collaboration between RDT and the Jamaila Tailoring Centre stands as a testament to the transformative power of skill-building initiatives. Through this concerted effort, 83 adolescent girls have not only acquired tailoring expertise but have also unlocked opportunities for economic independence and social empowerment. As they stitch together a brighter future for themselves and their communities, their success stories resonate as a beacon of hope, illustrating the potential for sustainable development through skill empowerment initiatives.

### **Sustainability and Future Prospects:**

The success of this initiative extends beyond immediate outcomes. The program's sustainability lies in the ripple effect it has created within these communities. These empowered girls serve as role models, inspiring other young individuals to pursue skill development and entrepreneurship. Moreover, the ongoing support from RDT and the Jamaila Tailoring Centre ensures continued guidance and access to resources, fostering a conducive environment for sustained growth and expansion of these budding businesses.

## **Way Forwards**

- Develop skill-building workshops and entrepreneurship training tailored for women to enhance their financial independence.
- Encourage and support women's participation in leadership positions across sectors through mentorship programs and leadership training.
- Facilitate access to microfinance and credit for women entrepreneurs to start or expand businesses.
- Expand adult literacy programs to reach more women, focusing on basic education and life skills.
- Provide specialized training in organic farming techniques and offer support for women to engage in sustainable agricultural practices.



- cooperatives or support existing ones to encourage collective farming and marketing of organic produce by women.
- Implement projects to enhance access to clean water sources, educate women on water conservation, and promote efficient water usage.
- Conduct awareness campaigns on sanitation and hygiene practices, providing access to proper facilities for women and girls.
- Introduce environmental education programs focusing on sustainable practices and biodiversity conservation led by women.
- Initiate tree plantation drives involving women to increase green cover and promote environmental sustainability.
- Conduct workshops on women's health issues, reproductive health, and mental health awareness.
- Provide legal awareness sessions and support services for women to understand their rights and access legal aid when needed.
- Establish networks and support groups for women to share experiences, offer mutual support, and create a platform for collaboration.



**Signature**

**Md. Sadullah**  
**Chief Petron, RDT**  
**Sangram, Madhubani, Bihar**